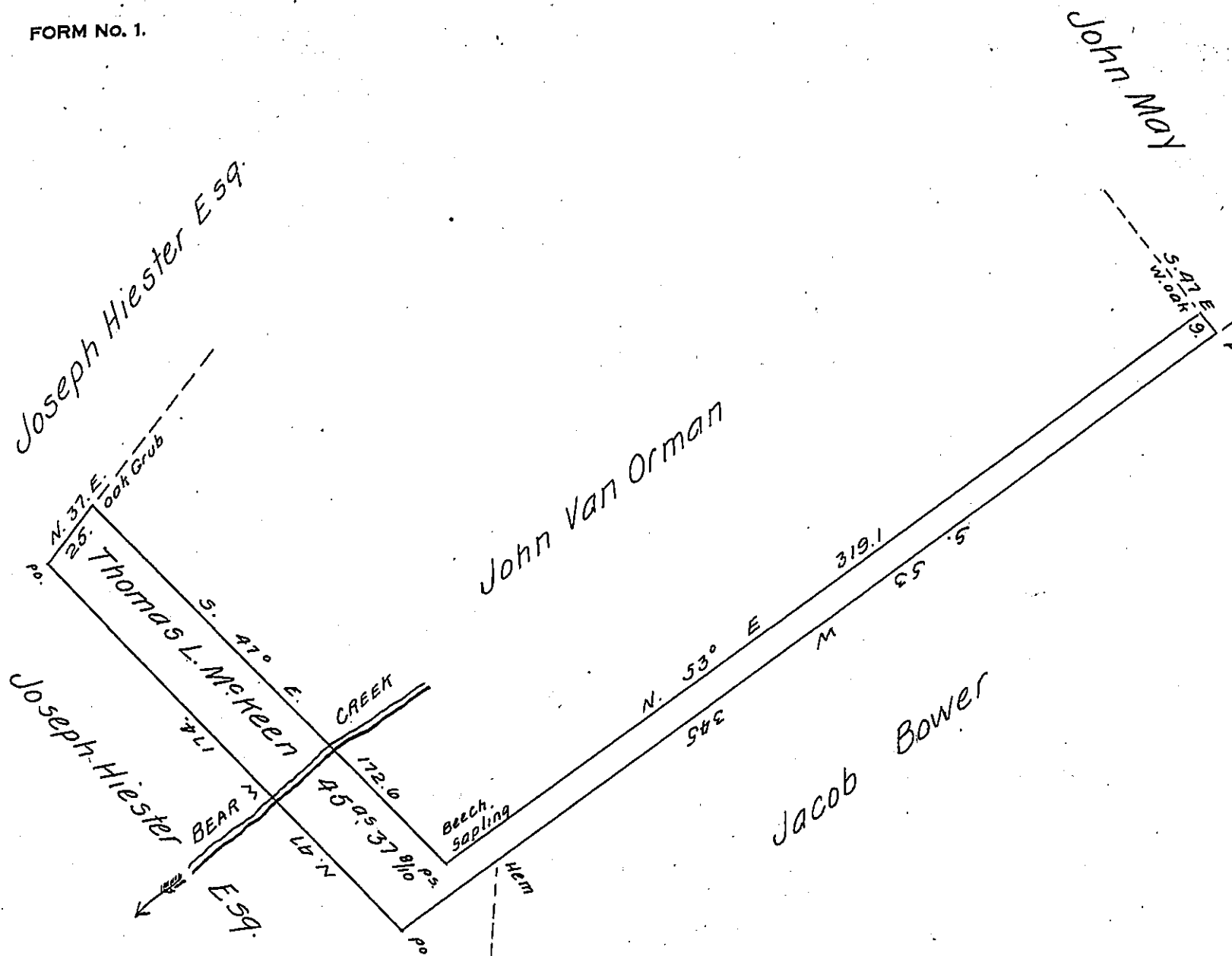


FORM NO. 1.



Draft of a tract of land situated on the waters of Bear Creek in Bear Creek township Luzerne County. Containing Forty five acres and thirty seven and eight tenth perches strict measure.

Surveyed the above on the 25th day of August 1868 to Thomas L. McKeen in pursuance of his warrant dated July 31st 1868.

Hon. J. M. Campbell }
 Surv^r. Genl }

John Sturdevant
 Surveyor for Luzerne Co

IN TESTIMONY that the above is a copy of the original remaining on file in the Department of Internal Affairs of Pennsylvania, made conformably to an Act of Assembly approved the 16th day of February 1833, I have hereunto set my hand and caused the Seal of said Department to be affixed at Harrisburg, this nineteenth day of December 1907.

Henry Howard
 Secretary of Internal Affairs.

Return of Survey
 Luzerne County
 Michael Meylert